

Cdc25A (phospho Ser75) Polyclonal Antibody
Catalog # AP66988**Specification**

Cdc25A (phospho Ser75) Polyclonal Antibody - Product Information

Application	WB
Primary Accession	P30304
Reactivity	Human, Mouse, Rat
Host	Rabbit
Clonality	Polyclonal

Cdc25A (phospho Ser75) Polyclonal Antibody - Additional Information**Gene ID** 993**Other Names**

CDC25A; M-phase inducer phosphatase 1; Dual specificity phosphatase Cdc25A

Dilution

WB~~Western Blot: 1/500 - 1/2000. ELISA: 1/10000. Not yet tested in other applications.

Format

Liquid in PBS containing 50% glycerol, 0.5% BSA and 0.09% (W/V) sodium azide.

Storage Conditions

-20°C

Cdc25A (phospho Ser75) Polyclonal Antibody - Protein Information**Name** CDC25A**Function**

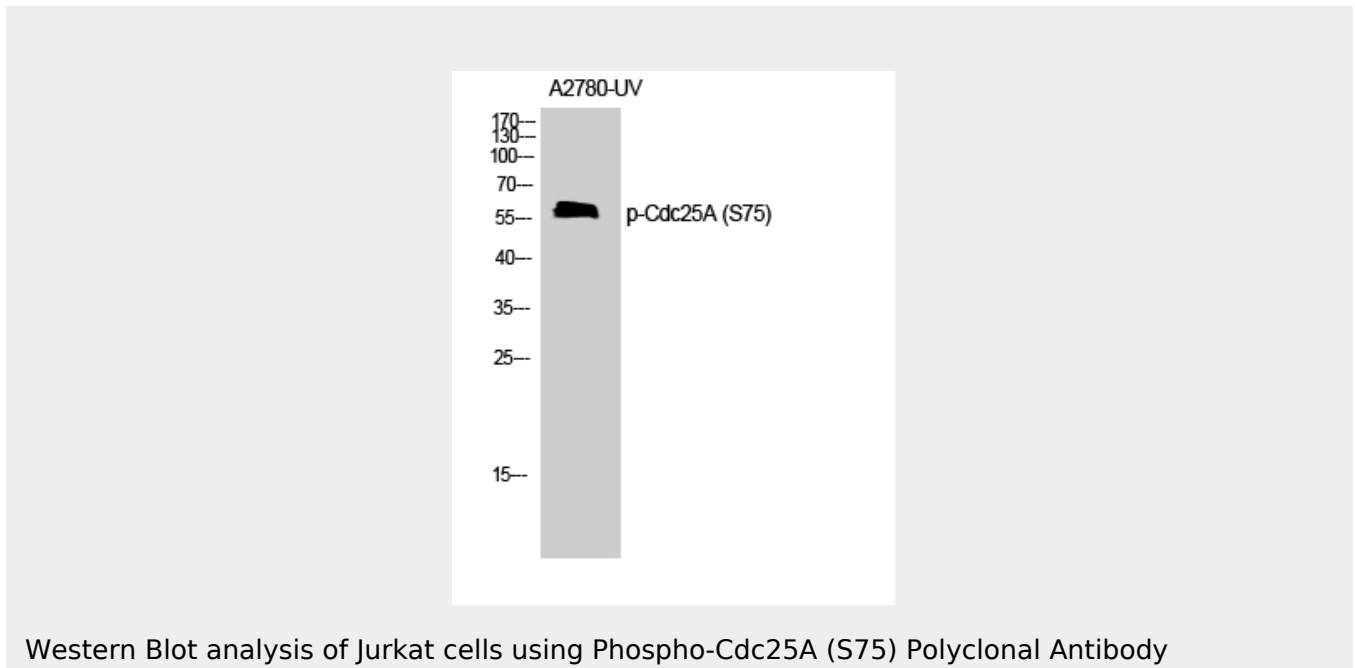
Tyrosine protein phosphatase which functions as a dosage- dependent inducer of mitotic progression (PubMed: [12676925](http://www.uniprot.org/citations/12676925), PubMed: [14559997](http://www.uniprot.org/citations/14559997), PubMed: [1836978](http://www.uniprot.org/citations/1836978), PubMed: [20360007](http://www.uniprot.org/citations/20360007)). Directly dephosphorylates CDK1 and stimulates its kinase activity (PubMed: [20360007](http://www.uniprot.org/citations/20360007)). Also dephosphorylates CDK2 in complex with cyclin-E, in vitro (PubMed: [20360007](http://www.uniprot.org/citations/20360007)).

Cdc25A (phospho Ser75) Polyclonal Antibody - Protocols

Provided below are standard protocols that you may find useful for product applications.

- [Western Blot](#)
- [Blocking Peptides](#)
- [Dot Blot](#)
- [Immunohistochemistry](#)
- [Immunofluorescence](#)
- [Immunoprecipitation](#)
- [Flow Cytometry](#)
- [Cell Culture](#)

Cdc25A (phospho Ser75) Polyclonal Antibody - Images



Cdc25A (phospho Ser75) Polyclonal Antibody - Background

Tyrosine protein phosphatase which functions as a dosage-dependent inducer of mitotic progression. Directly dephosphorylates CDK1 and stimulates its kinase activity. Also dephosphorylates CDK2 in complex with cyclin E, in vitro.